

# Lake Baroon Catchment Care Group



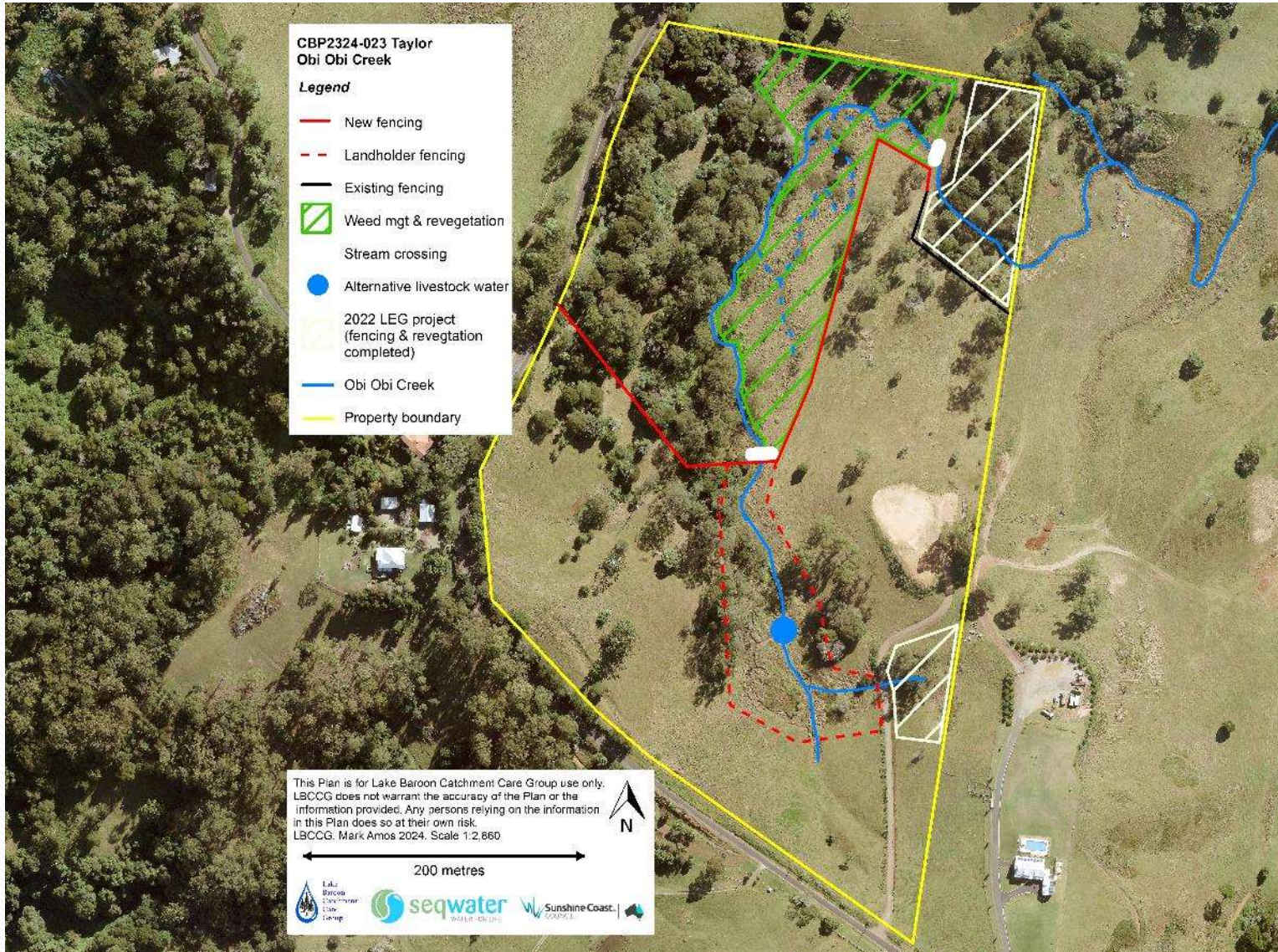


# Obi Obi Creek (Riparian fencing, Revegetation and Stream Crossings)





# Obi Obi Creek – Property Plan







- 2000 Stems planted, recycled tree guards.
- 450 m riparian fencing
- 2 Concrete mat crossings
- LEG Grant









# Erosion and Sediment Control

# Witta







- Project links with current projects and previous LBCCG projects on the property (Matt Bateman)





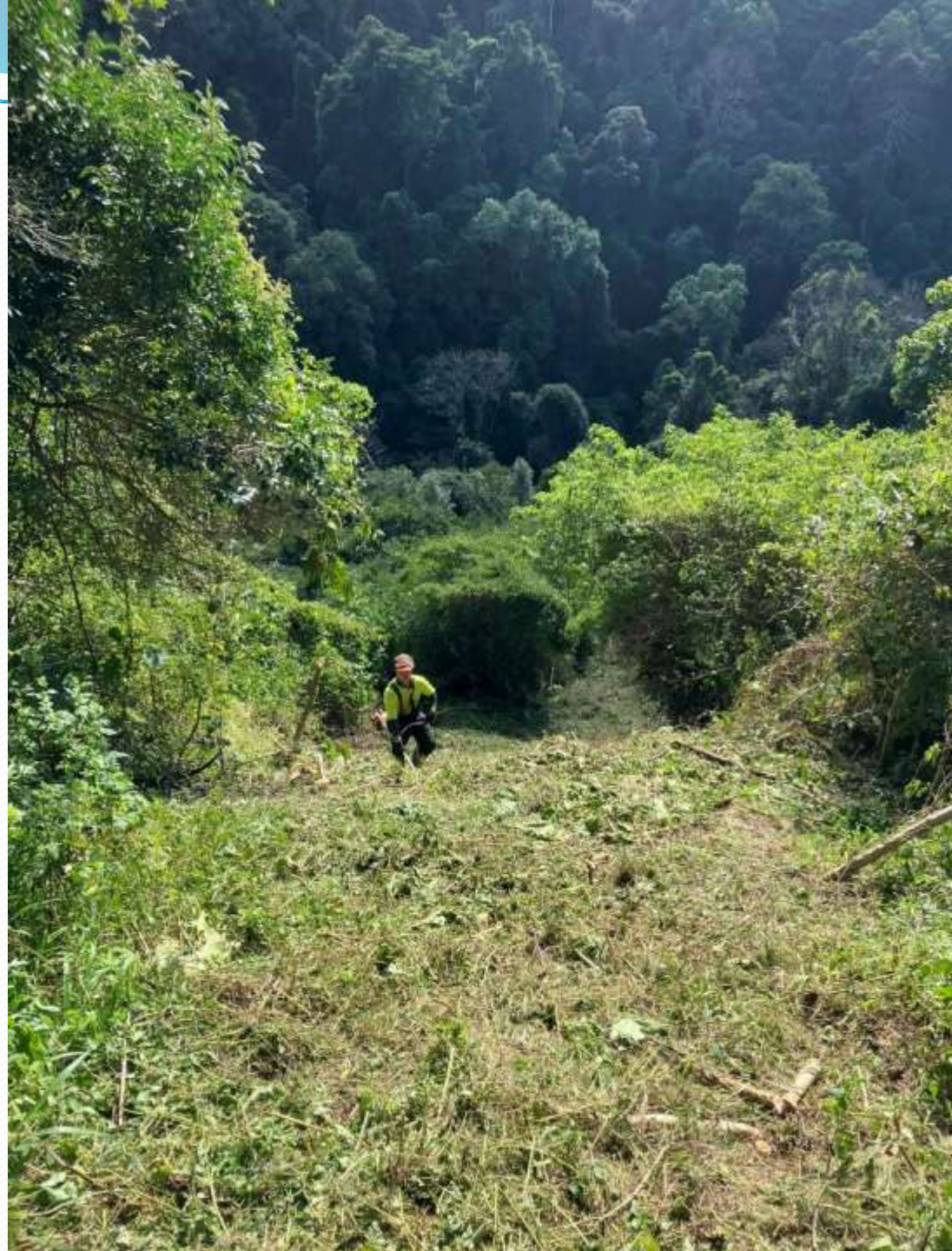




• 2700 stems planted



- Preparations have begun for 2024/25 project
- Lantana control and fencing
- 1000 stems to be planted at the end of year







# Wells - update



October 2023 – 2.7 m<sup>3</sup>/Day





May 2024 – 255.9 m<sup>3</sup>/Day

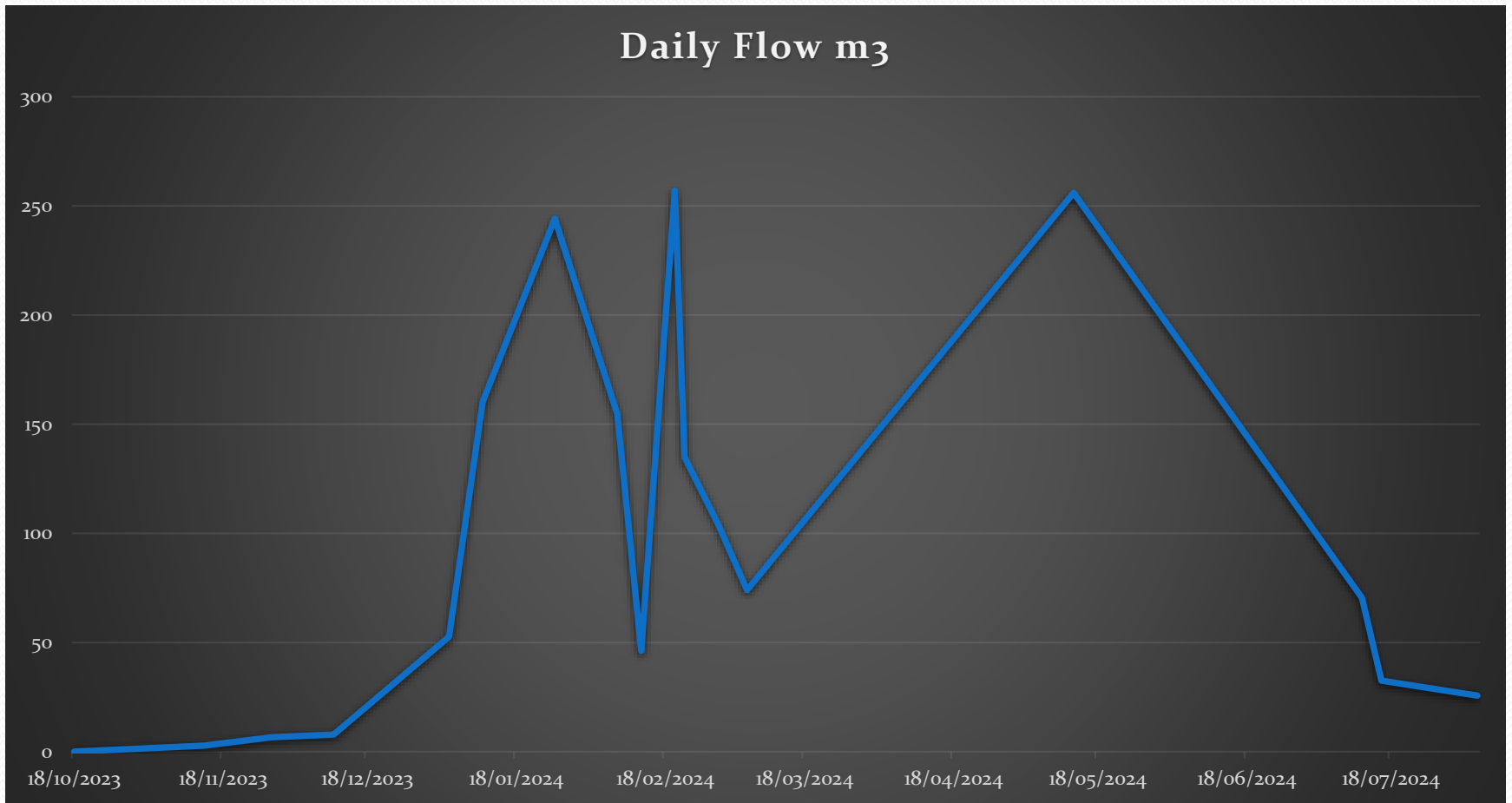




August 2024 – 25.6 m<sup>3</sup>/Day







- Total water drained - 33,778 m<sup>3</sup>



**Maintenance –  
multiple  
projects**







## Maintenance

- Gynura and creeping vetch have been causing some problems for our plantings, that have had access problems due to wet conditions.