

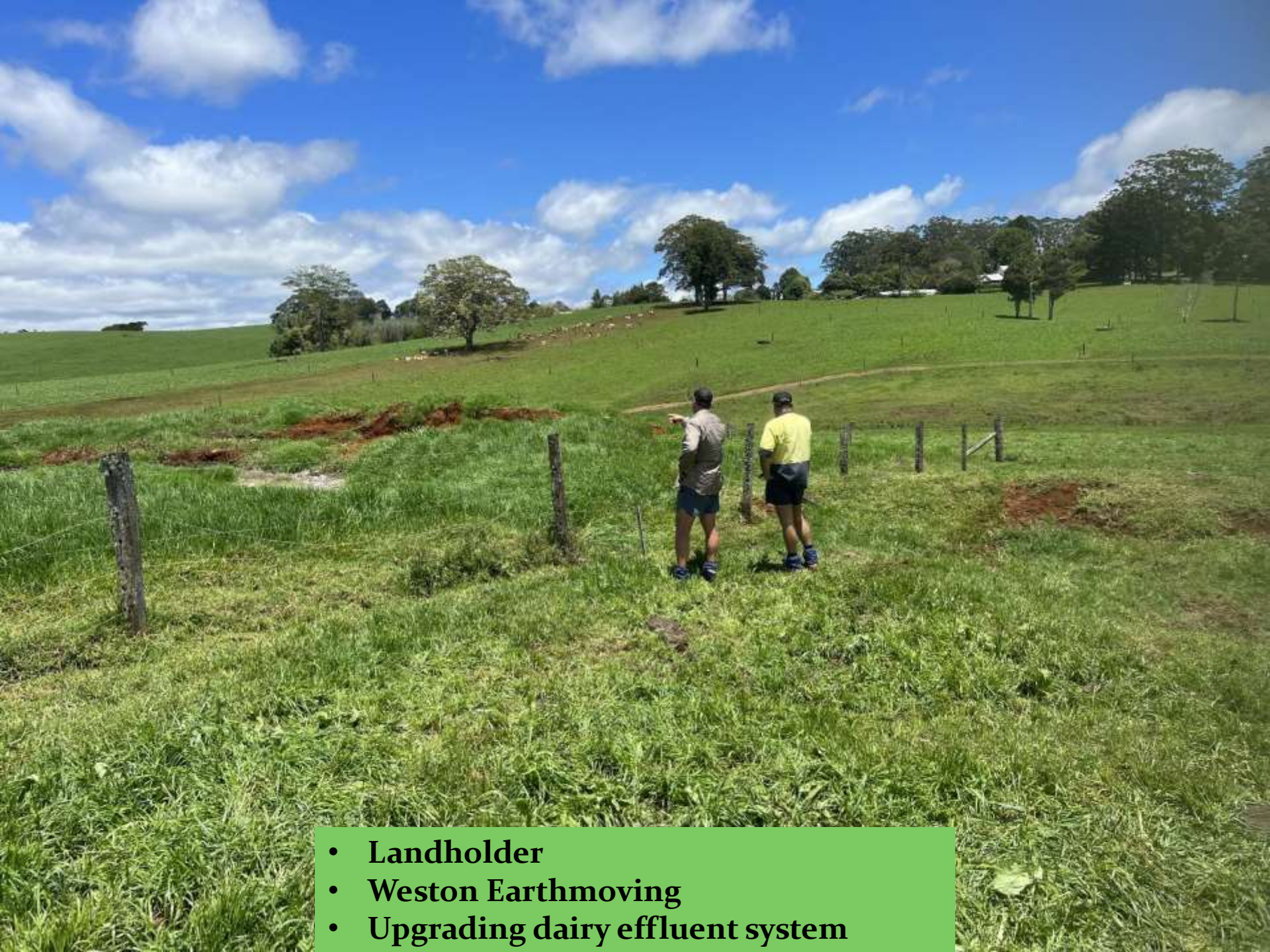


Riparian Condition Improvement, Agricultural Practice Improvement Report 8th February 2024



Lake
Baroon
Catchment
Care
Group

Working with our community...for our waterways



- Landholder
- Weston Earthmoving
- Upgrading dairy effluent system



- 265 meters of formed drainage contour banks
- 240 000 litres of storage capacity



- **New effluent system now has a total holding capacity of 740 000 litres**
- **Pond overflow now travels 345 Meters to reach Walkers Creek**

**2nd January 200mm of rainfall
Contours ponds withstood event**



16th January 101 mm of rainfall
Contours held entire effluent overflow



Bottom two contours had already absorbed overflow water



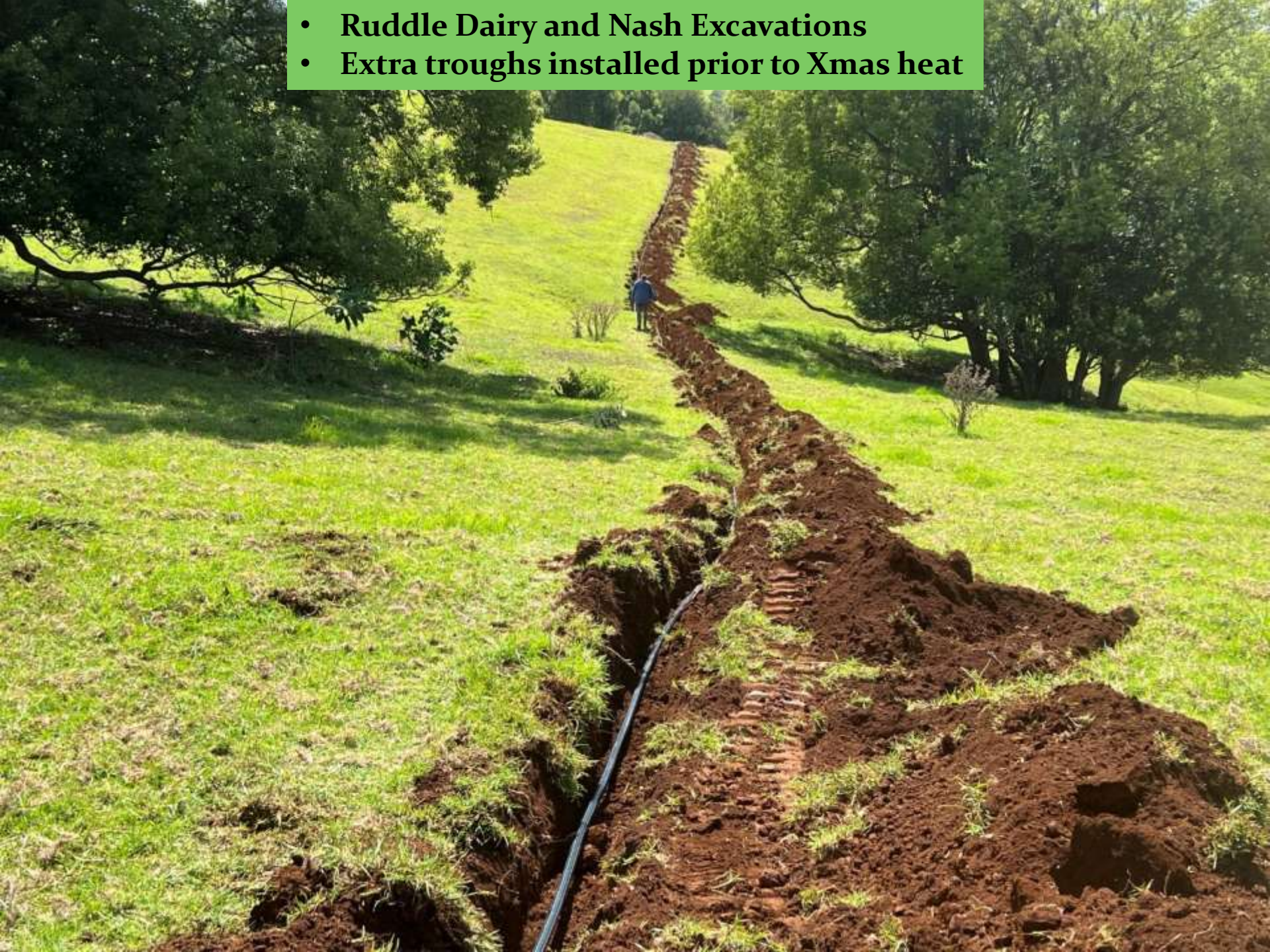
Bottom contour had not reached capacity



**Minor adjustment on contour bank
Raised end embankment 200mm**



- Ruddle Dairy and Nash Excavations
- Extra troughs installed prior to Xmas heat



- Five troughs installed to avoid trough crowding
- Resulting in extended grazing periods by the herd





- Riparian fencing commenced along Obi Obi Creek
- Stage two of the Landholder Project
- Tim Davies TAG Rural Fencing

- **Riparian fencing project**
- **Continuing up the ridge line**
- **8 Hectares of remnant protected**



- **Fineline placement dictated by the terrain**
- **700 meters of Obi Obi frontage below**



- **800 meters of fence line completed**
- **Waratah Longlife Barbwire**



- **Landholder property**
- **900 meters upstream**
- **91 Acres or 38 Hectares**
- **50 head of Adult Cattle**
- **445 meters of Obi Obi Creek Frontage**











Low level concrete crossing Bunya Block