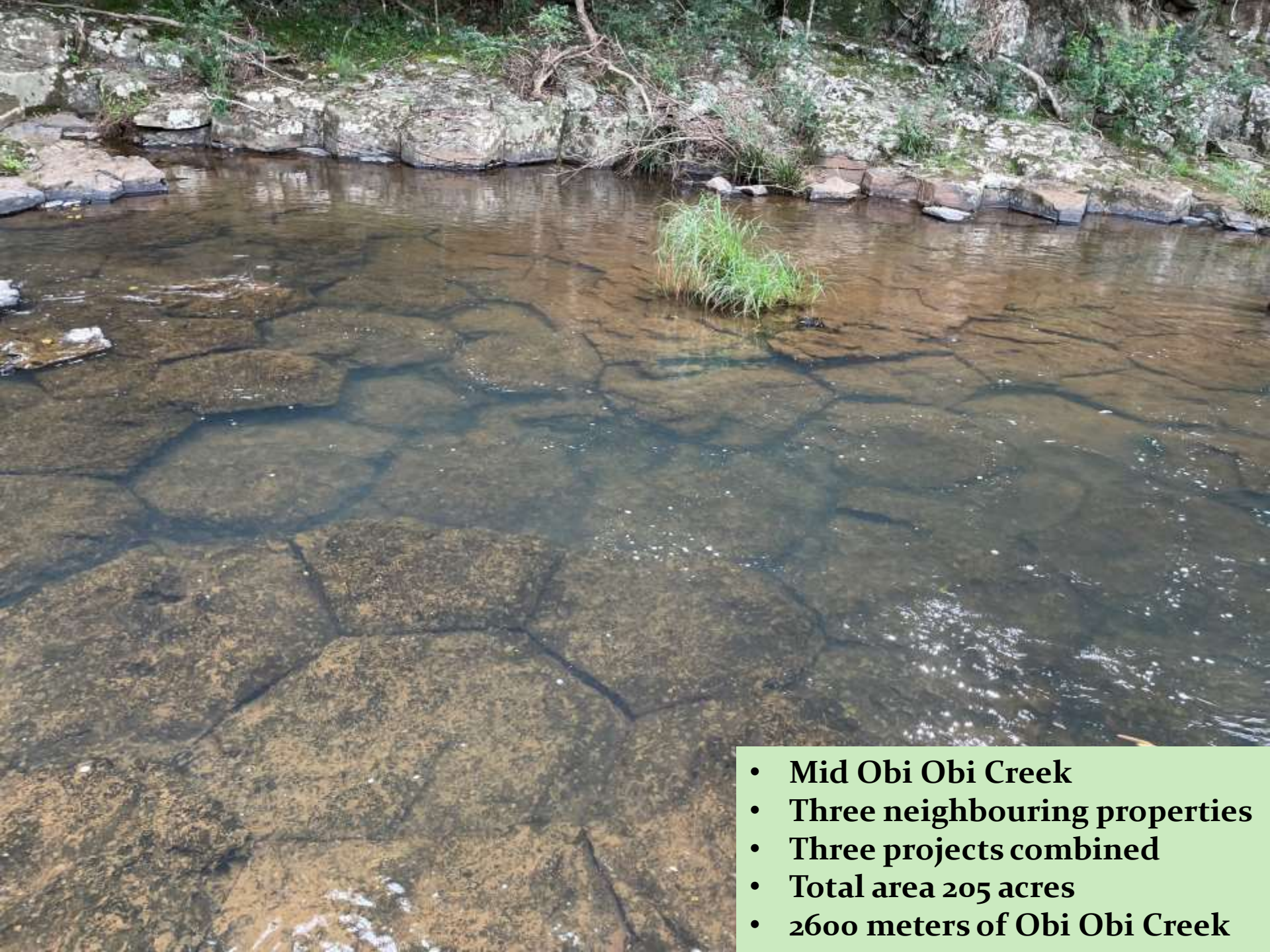


Riparian Condition Improvement,
Agricultural Practice Improvement
Annual Report
9th November 2023





- **Mid Obi Obi Creek**
- **Three neighbouring properties**
- **Three projects combined**
- **Total area 205 acres**
- **2600 meters of Obi Obi Creek**

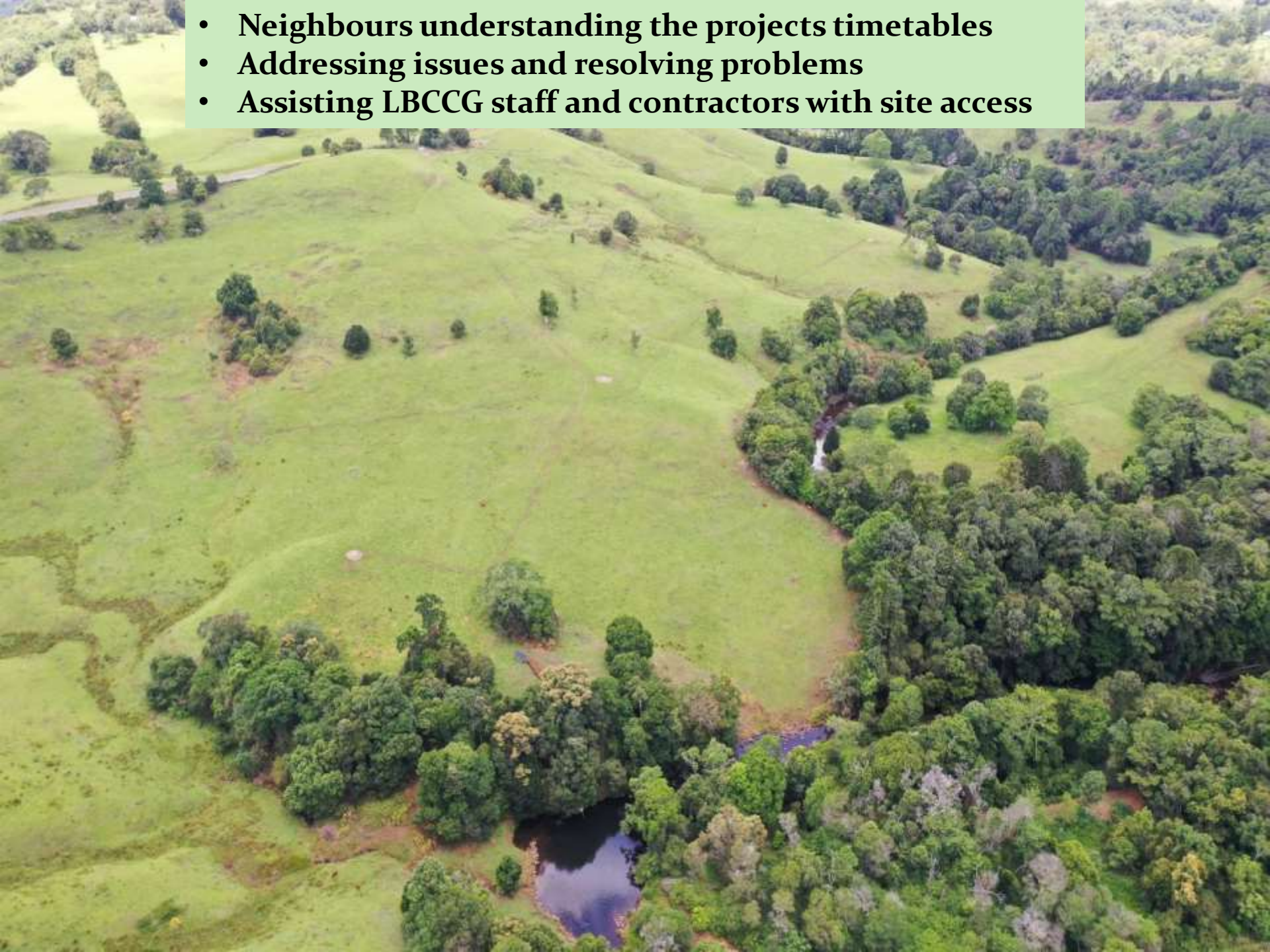


- Landholder
- 500 meters riparian fencing
- 8.5 HA /21 acres protected
- 400 stems planted



- Off Stream watering installed
- 3 x Concrete troughs
- 1 x Grundfos solar pump

- Neighbours understanding the projects timetables
- Addressing issues and resolving problems
- Assisting LBCCG staff and contractors with site access



- Landholder meeting with solar pump technicians
- Landholder had attended LBCCG field days on solar pumps





- 5 concrete water troughs are now the preferred livestock drinking points



- **Local Bee Keeper**
- **1100 meters of Obi Obi frontage**

- Ex Dairy
- 1350 Meters Obi Obi frontage
- 1300 Meters of riparian fencing
- Observed similar project on neighbouring dairy
- Easier livestock management
- Better neighbourhood harmony
- Improved creek heath and water quality





- The projects total 2.5 kilometres of riparian fencing
- 9 Hectares / 22 Acres of Riparian protected along Obi Obi Creek

- **Current Dairy**
- **2500 stems planted**
- **Along 700 meters of Arley Creek**
- **2.3 Hectares of riparian repair**
- **Positive neighbourhood feedback**





- Engaging with university students in the catchment
- Megan McDonogh of Earth and Atmospheric Science QUT
- The Effects of land management practices on slope stability on the Maleny plateau



- 100 landholder on invite list
- 30% average uptake of invites
- Neighbours meeting neighbours
- Industry networking
- New Ag product releases
- Sharing Ideas

- Four Workshops
- 125 Attendees
- 16 Guest speakers

Topic included

- Animal Health
- Farm Safety
- Women in Ag
- Catchment Weeds



- **Ongoing consultation with the dairy farms in the catchment**



- **Farmers seeking advice on how to improve their farm waste water issues**
- **Regular engagement with DAFF extension officers and dairy industry leaders**



Team SEQWATER

- On ground support
- Training
- Networking
- Challenges

