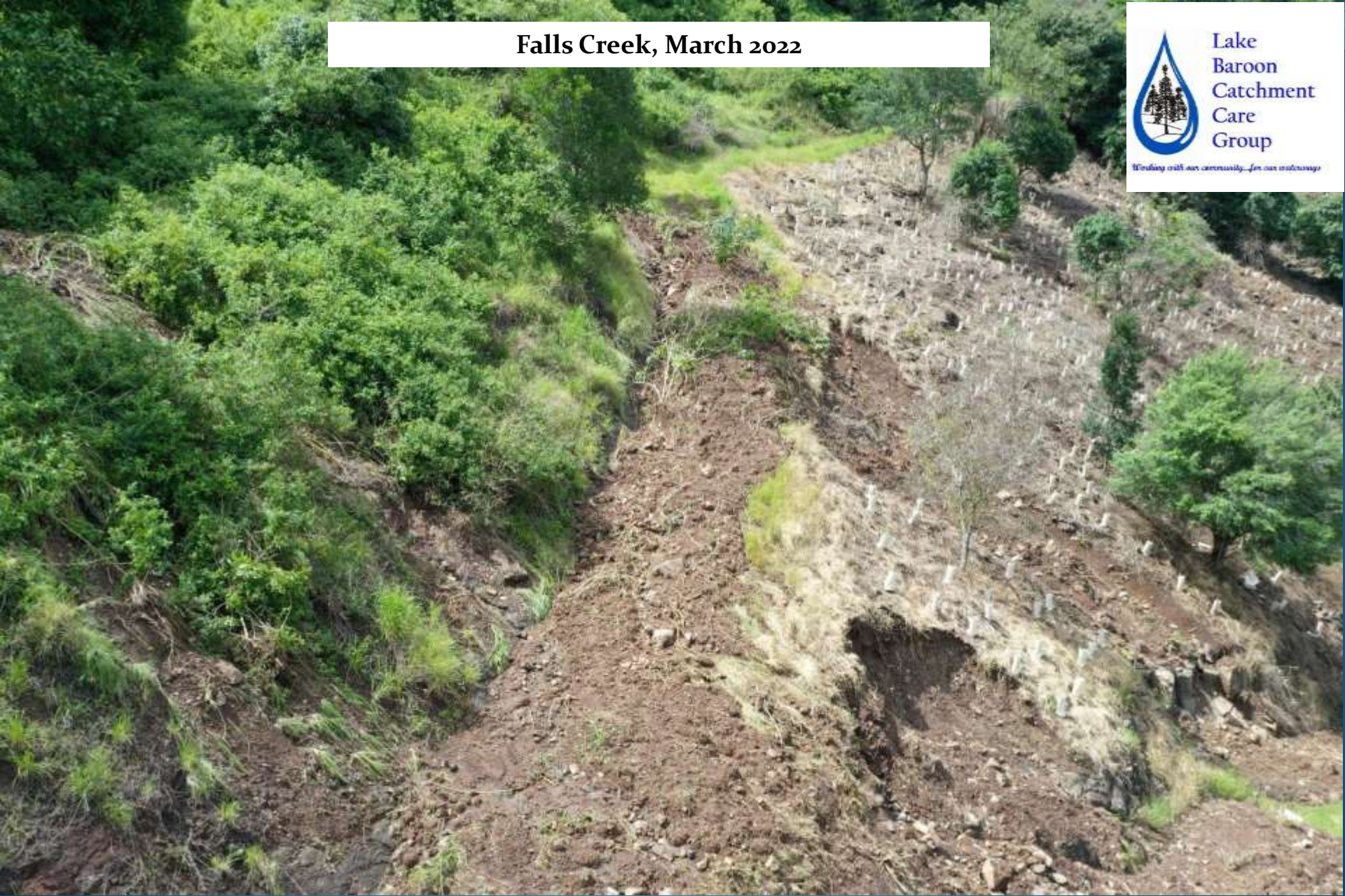
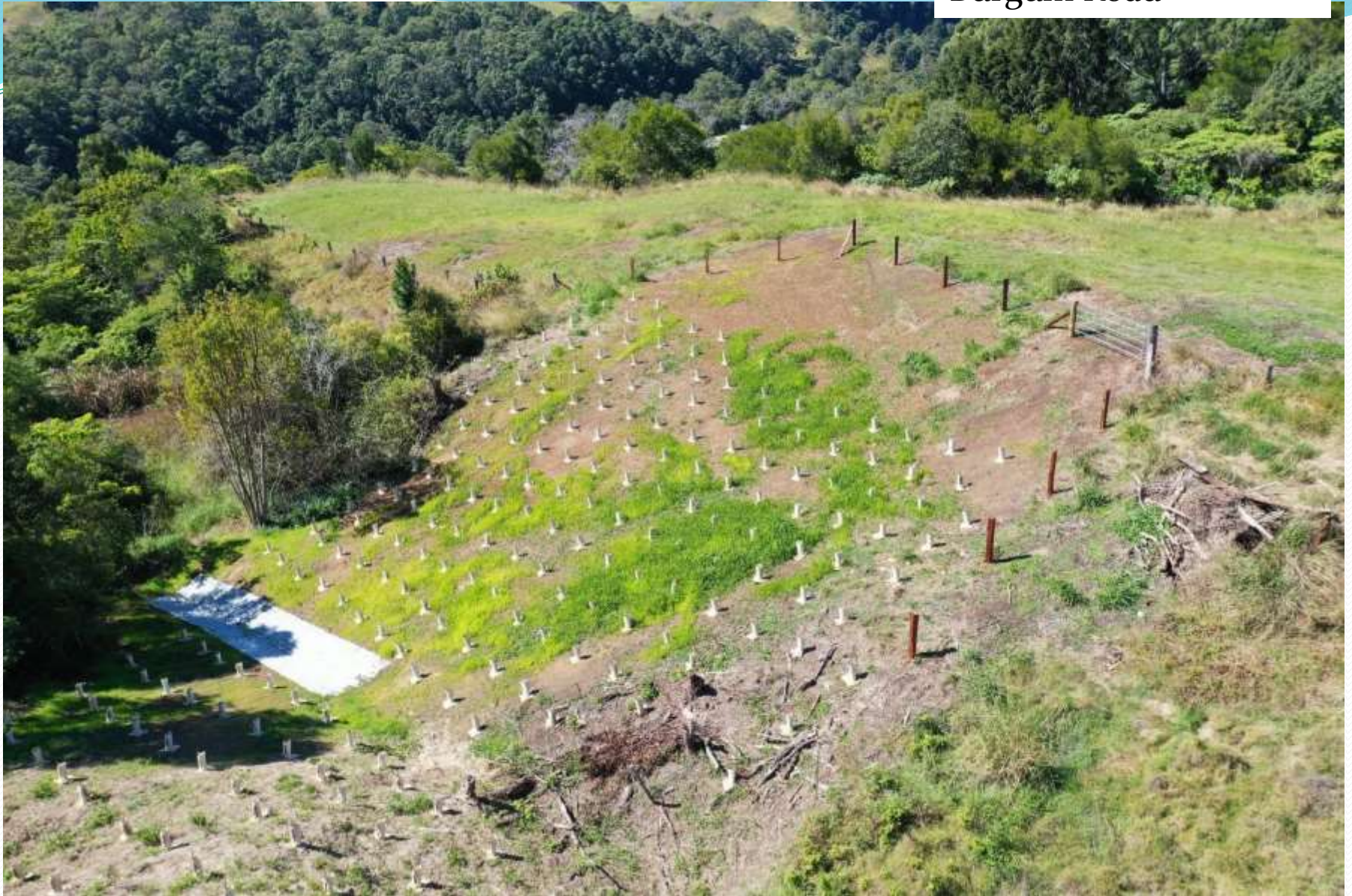


Falls Creek, March 2022



LBCCG - Erosion and Sediment Control  
AGM 2022/23 Report, 11-11-2023





**Nadi Lane**



Nadi Lane

Feb 2022



August 2023



- Phil Nash Contracting was only able to access the site at the end of 2022 due to the super saturation of the slip

# Project Outcomes

- Removal of spring water out of the slip zone, assisting in preventing supersaturation of the site.
  - 72,000 L/Day (Oct 2022)
  - 72 tonnes of weight drained from the soil profile each day
- Prevention of soil loss through surface drainage and revegetation
- Soil erosion and stabilisation through root diversity
- Planted trees eventually tap into the subsurface water and take over drawing the water out across the slip, replacing the subsurface drainage
- Great opportunity for LBCCG.



# Bridge Creek





- Extensive project that affected two landholders – Landholder losing soil down the hill and the neighbour's whole property was extensively unstable.



Exclusion  
fencing

Revegetation

5 Drainage wells installed and fitted with poly pipe which then feeds into a header tank and then out into two troughs for cattle.



Landholder's property below the drainage wells

# Well Installation





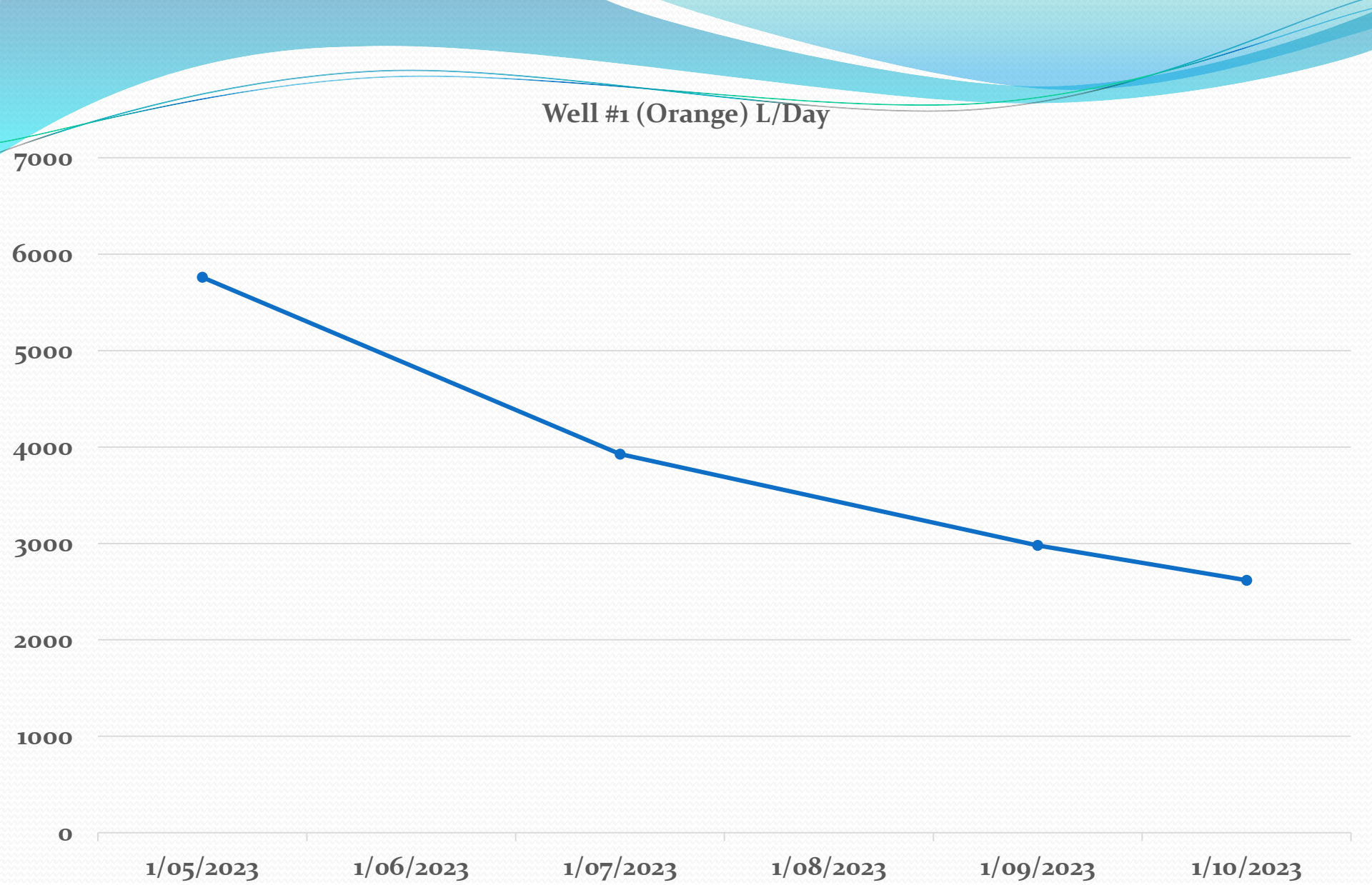
- Drainage lines increase the amount of water capture possible for each well.



## Tank Setup

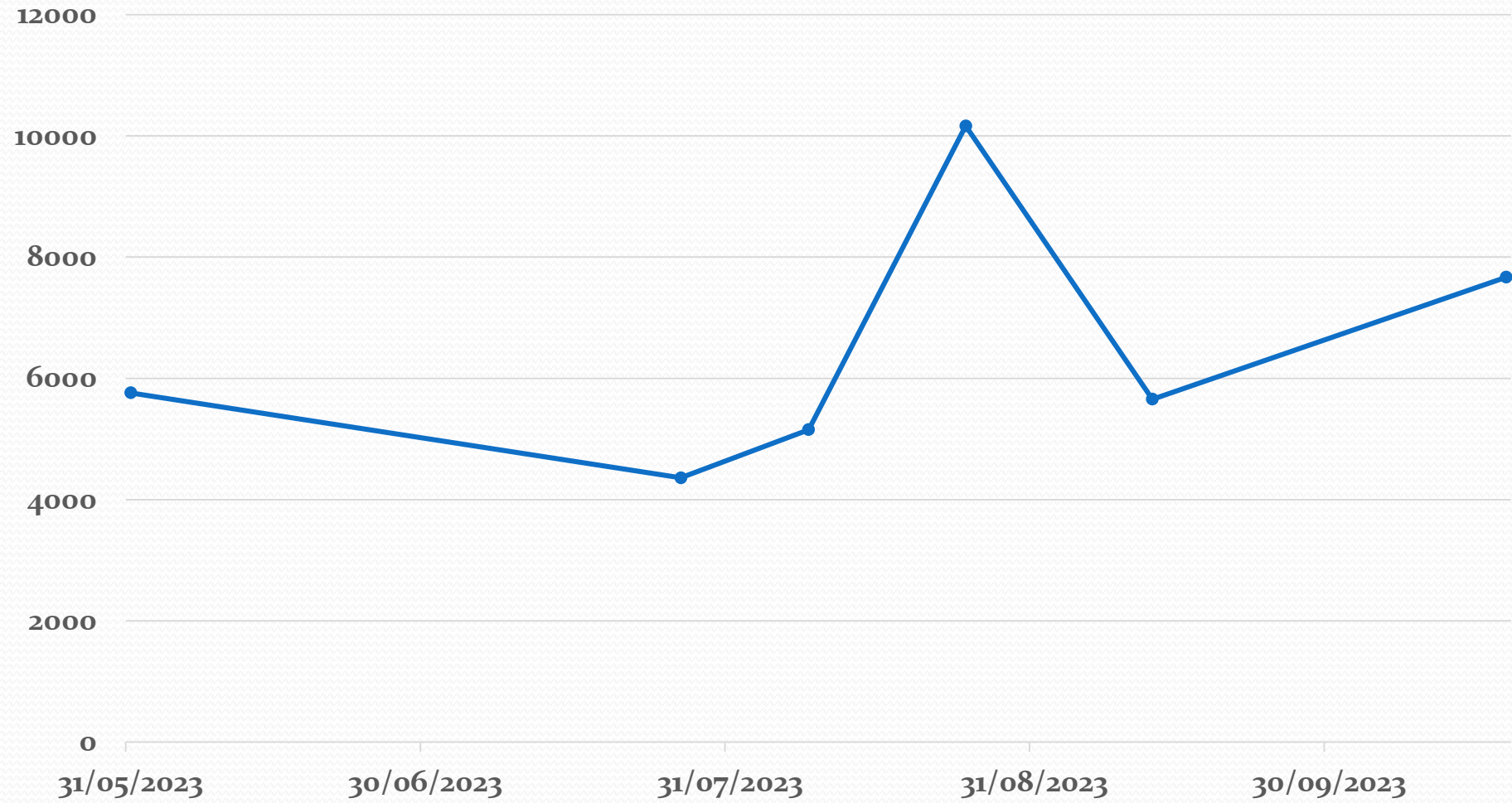
- Each well is kept separate, so that its flow can be measured
- Flow meters and a rainfall monitor will be installed





- Averaging the flow over the last few months a rough figure of 560,000 L has been removed by Well #1

### Total Water drained by all Wells L/Day







## Project Outcomes

- Landholders and LBCCG working together
- Stabilisation of the landslip area, providing water quality benefits
- Captured water is utilised for stock and then excess water is released into a formed waterway
- Future monitoring will assist in further development when using/installing well drainage systems.
- Innovation
- Positive results lead to further landholder engagement



**Falls Creek**