



Riparian Condition Improvement, Agricultural Practice Improvement Report June 2023





- Tree planting team
- Lower Obi Obi Creek
- 450 stems planted



- **Obi Obi frontage**
- **Permanent Riparian Fencing to be implemented**
- **Temporary Electric fencing has been installed**



- **High grazing pressure along Obi Obi Creek**
- **Ongoing landholder weed control**



- Livestock utilising the OSW system



Landslip

- Planting a cover crop of Millet



Landslip

- Phil Nash Earthmoving



- **Phil Nash Earthmoving**
- **4 concrete water troughs**
- **785 meter of poly pipe**
- **Servicing 8 paddocks**
- **Supplying water for 240 cows**



- Riparian fenced areas along Arley Creek
- Commenced site prep for planting



- Dam used for OSW supply
- Site heath very good
- Grass buffers very strong



Farm management excludes livestock from Riparian areas



- **Reduced site erosion**
- **Pockets of regeneration**



- **Woody weed control**
- **Red Cedars colonising**

Arley Creek

December 2019



Arley Creek

• Creek fenced Dec 2019



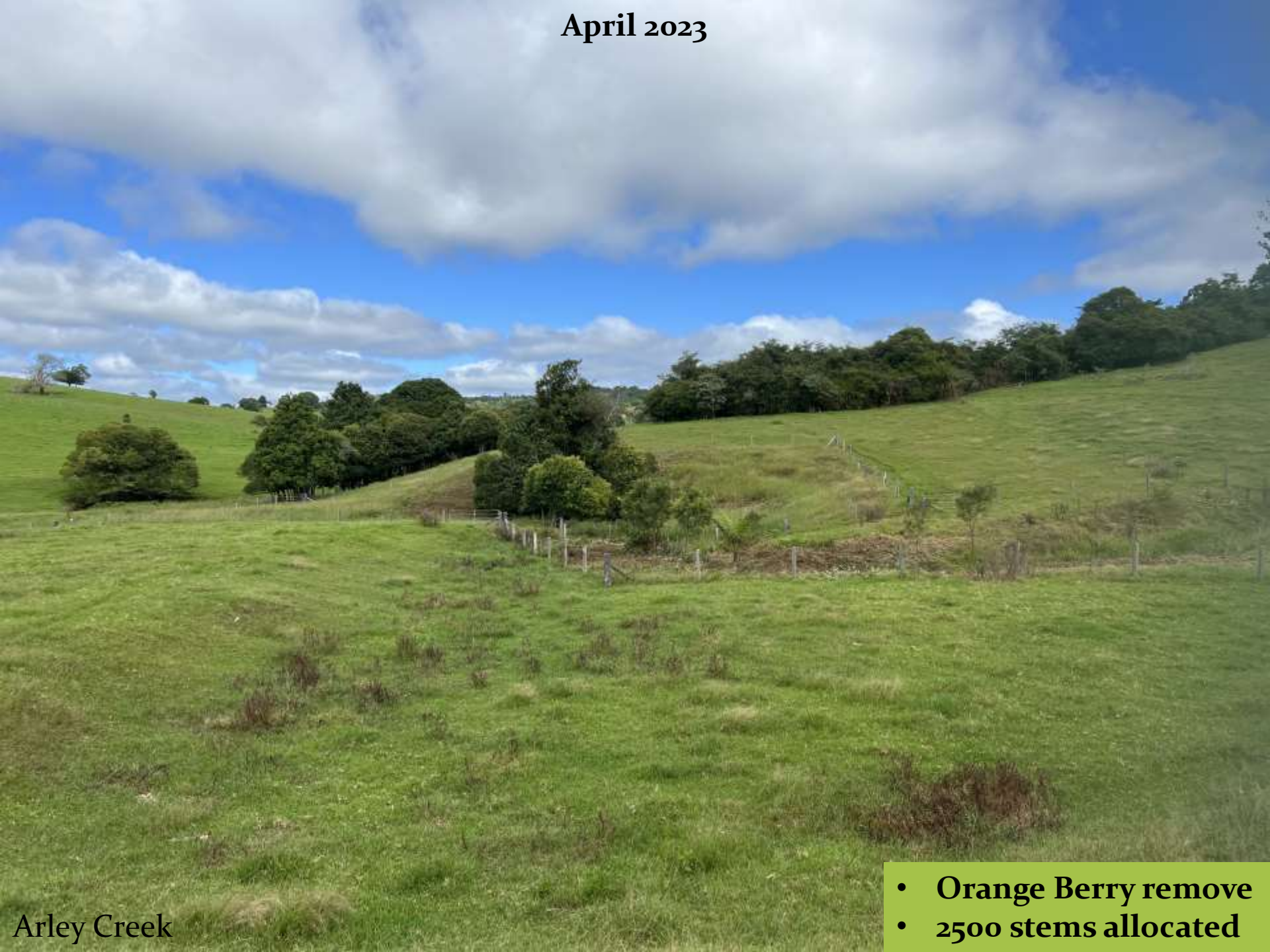
• Erosion area stabilised



Arley Creek

• Orange Berry infestation

April 2023



Arley Creek

- Orange Berry remove
- 2500 stems allocated



2.5 km Obi Obi Creek Frontage

April 1988



- **Tim Davies**
- **TAG Rural Fencing**
- **Obi Obi Creek**

**Landholder
helping with fence
line placement
and weed removal**





- Riparian fences placed to allow good buffers



- Livestock congregated at previous watering sites
- Livestock now sourcing water from an aged dairy OSW

- Women in Ag Workshop
- 27 Attended 4 Speaker

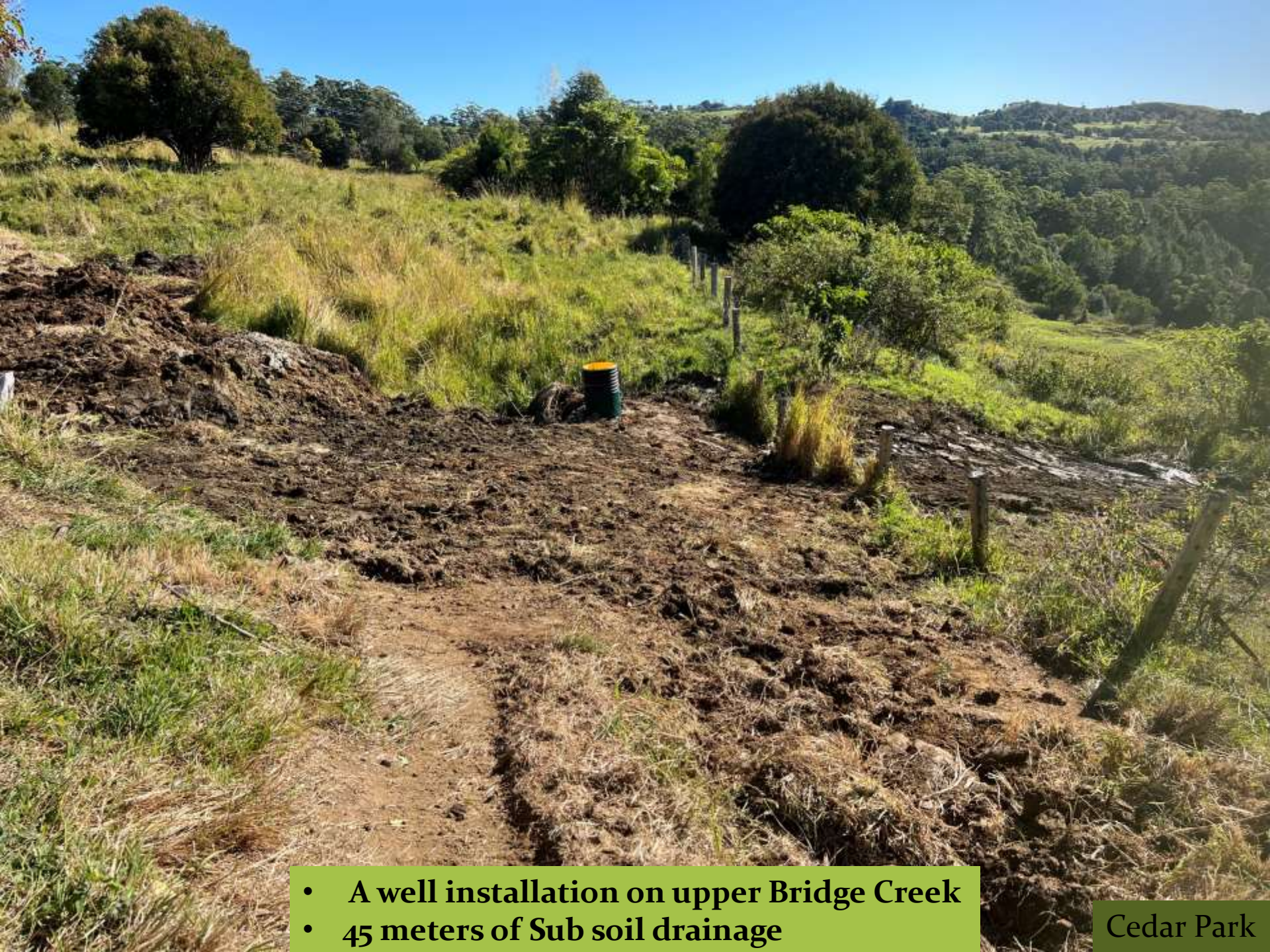
- Kate Power - Kilcoy Global Foods
- Jennifer Nichols - ABC Journalist
- Ann Ross - Hive Haven
- Scott Whittaker - Hinterland Bees



Venue: Maleny Cheese Cafe



The serious part of the workshop



- A well installation on upper Bridge Creek
- 45 meters of Sub soil drainage



Off stream watering on Cedar Park



The End