



Lake
Baroon
Catchment
Care
Group

Working with our community... for our waterways

Lake Baroon Catchment Care Group

Dairy Program Report

11 February 2021

- **Concrete bunding to be installed**
- **Yard washdown escaping in catchment**
- **Washdown to be redirected to existing effluent system**



- **Bunding install at Hopper Dairy August 2017**
- **This yard bunding to be replicated at Wittacork Dairy**
- **Bunding dimensions 100mm high x 375mm wide**



- **Calf rearing area to be upgraded**
- **Cork Family to contribute to project**
- **Site hardening and a effluent trap/transfer system**



Protest Engineering; Sean Kelly, Alex Ennis and Ryan Hofman

- **Discussing effluent pond drill test sites**
- **Prompt service**
- **Awaiting reports**





Protest Engineering 100mm test drill sites

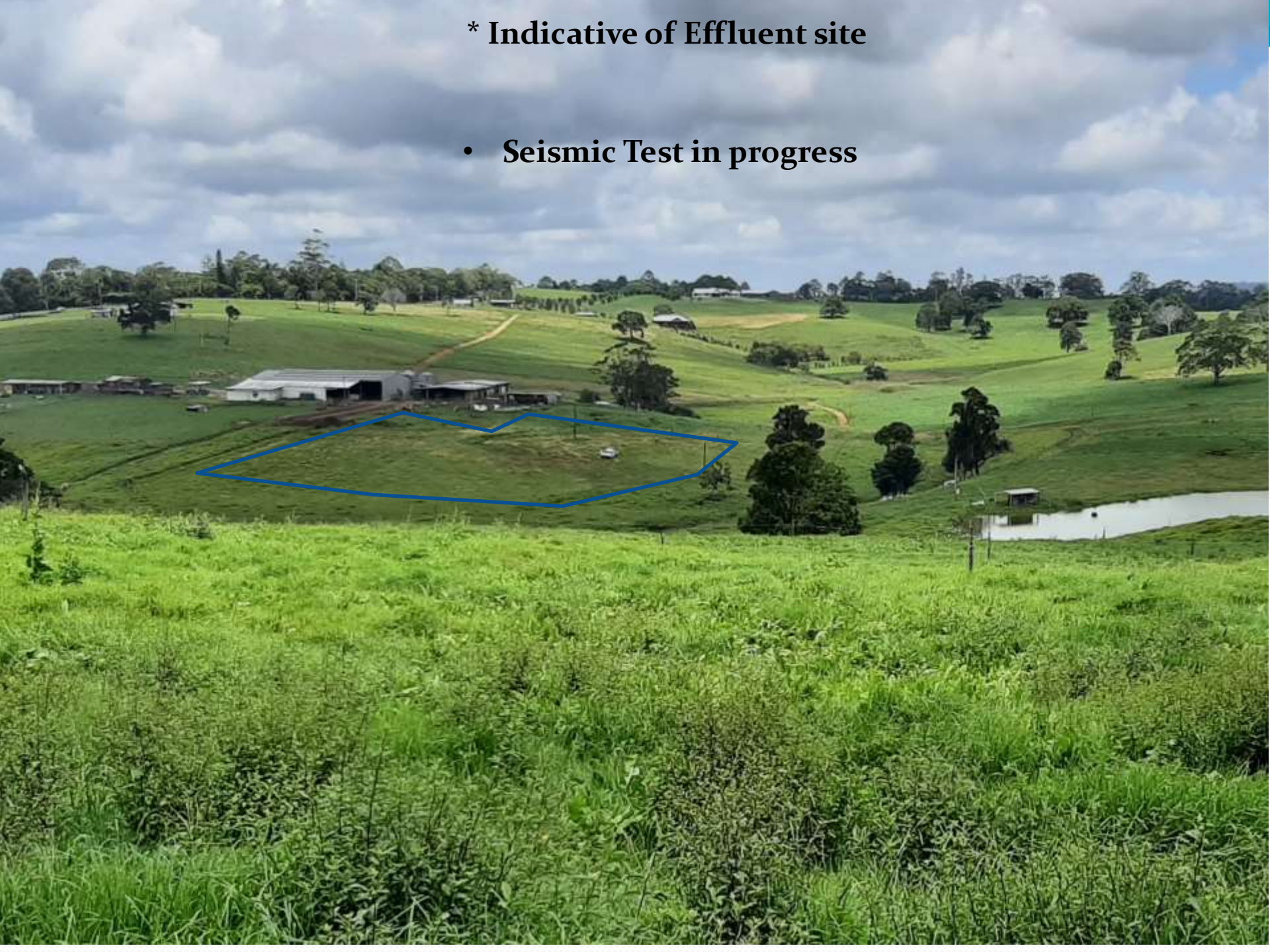


- **Seismic Testing**
- **Sunny day was required**
- **Site slashed prior by landholder**
- **Four Transects**
- **Six hours to complete**
- **Test indicating a flat bed**

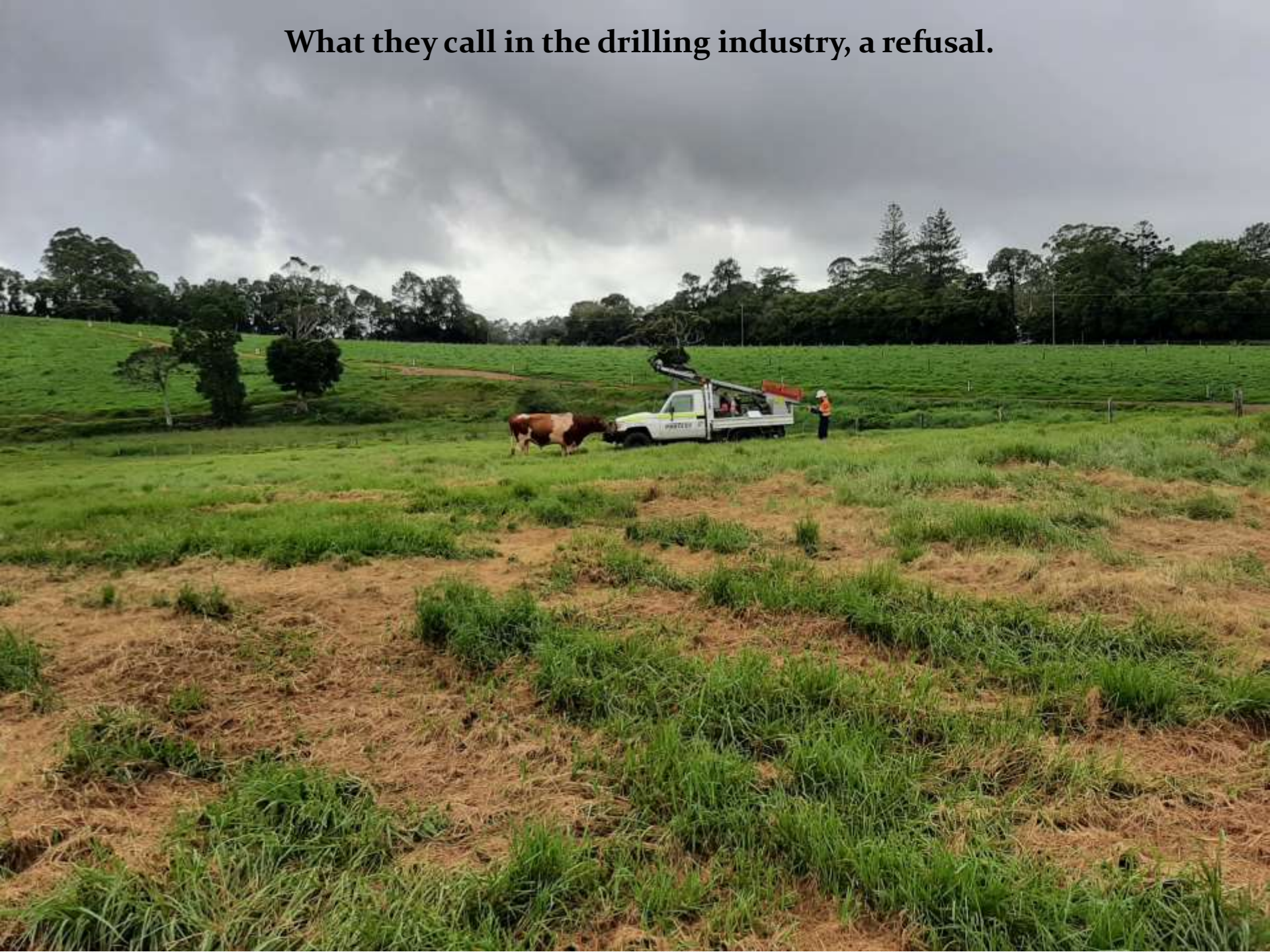


*** Indicative of Effluent site**

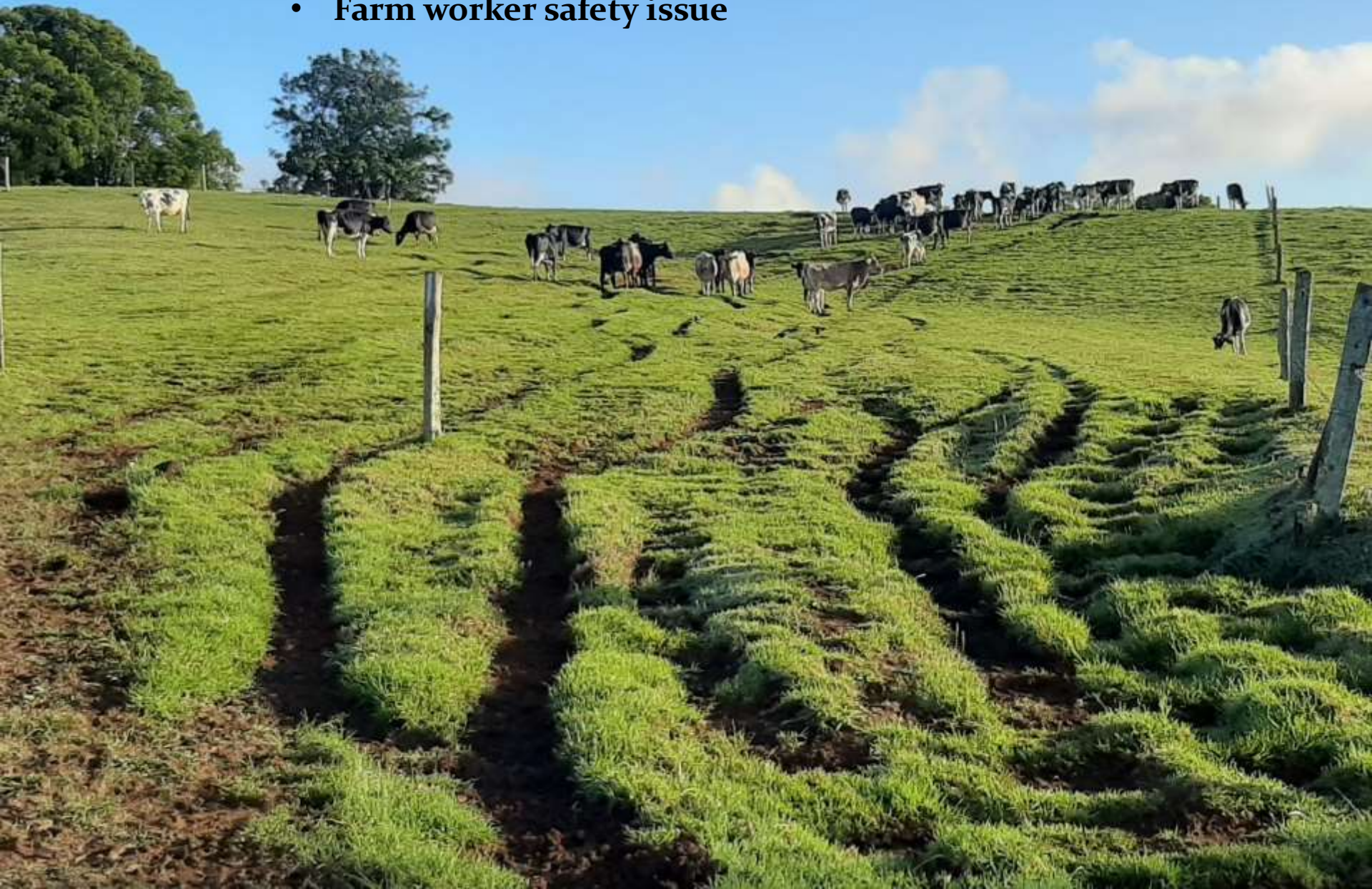
- Seismic Test in progress**



What they call in the drilling industry, a refusal.



- **Milking herd free ranging to and from parlour**
- **Severe tracking occurring**
- **Sediment loss in wet weather**
- **Farm worker safety issue**



- **Laneway implemented**
- **Tracking area revamped**
- **Improved herd travel time**
- **No sediment loss on laneway**
- **Permanent and electric fencing installed**



- **Arley Creek showing the effects of unrestricted livestock access**



Photo taken August 2018

- **Riparian fencing along Arley Creek**
- **Improved stream bed vegetation**
- **Noticeable birdlife increase**



- **Designated crossing constructed 1960's**
- **Site pugging by livestock**
- **Livestock water contaminated**
- **Poor ground cover**



Photo taken August 2018

- **Photo from new low level crossing**
- **Site coping with high stream flows**
- **No stream bed erosion**





- **Riparian buffer on Daley Creek**
- **Excellent aquatic passage**
- **Health grass buffer**

For Xmas we got a truck load of concrete water troughs



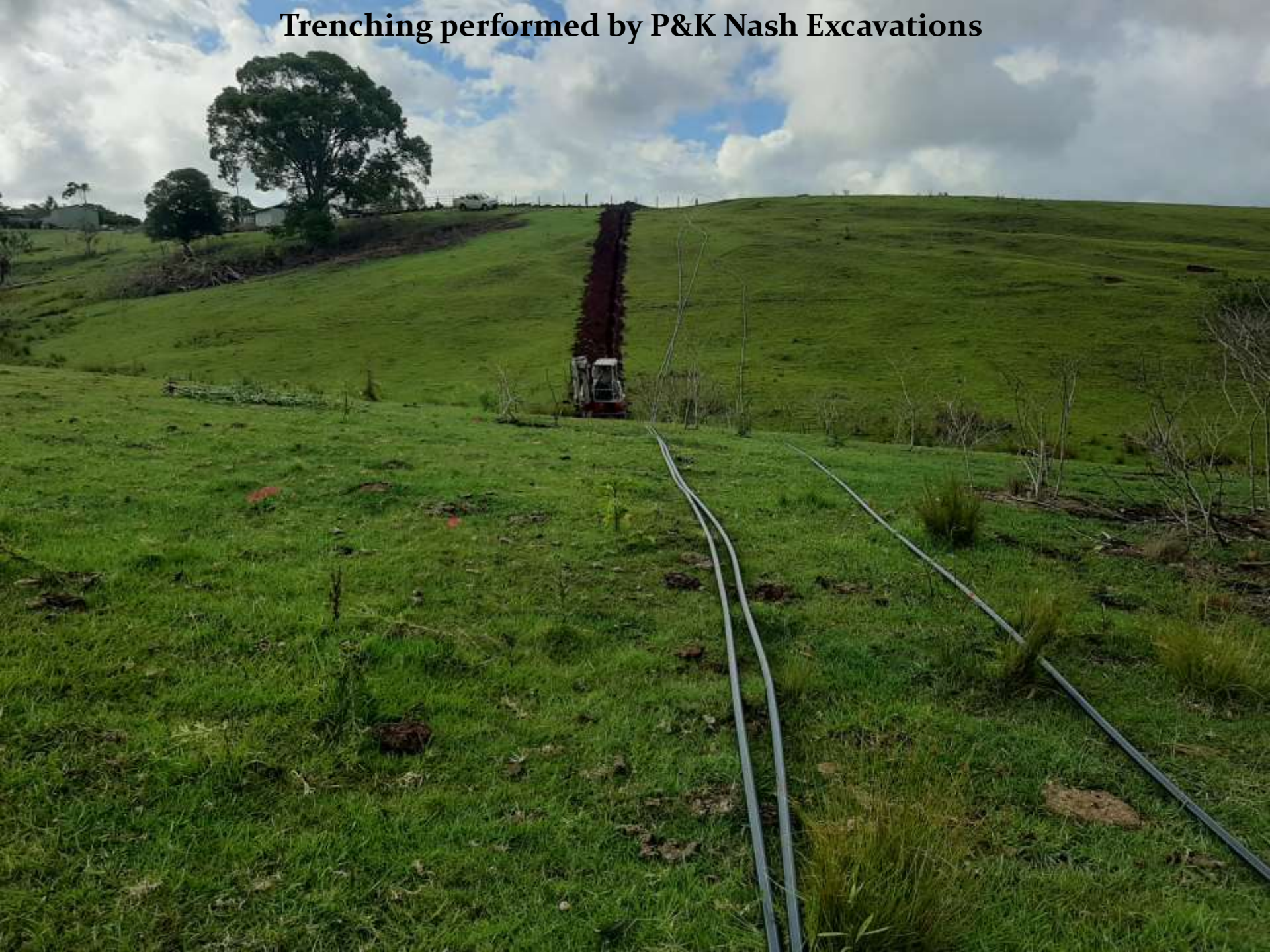
- Keith Hopper assisting with storage and loading
- Ernie Ferriday and Luke Ferguson and Whip
- Troughs for the Ferriday Farm OSW project



Poly pipe spinner loaned by The Pump House Beerwah



Trenching performed by P&K Nash Excavations



- **Subtropical Dairy workshop**
- **Healthy Hooves**
- **Presenter Andres Ardila**
- **Zero Lameness Consultant**



- Visit to Francis Woods Dairy Booroobin
- New feed mixing shed at Fort Lodge
- The Woods Family also hold a grazing property on Daley Creek



Phil Nash

Francis Woods