

CORE Projects Report, April 2020



Photo: Obi Obi Creek
below Kings Lane Weir,
Pacific Plantations

Current Projects

- ▶ Warner
- ▶ Barlow
- ▶ Crick
- ▶ Pacific Plantations



Photo: Rock formations along Alcorn Creek, Garry Crick

Warner - Upper Falls Creek Riparian Fencing and Revegetation Stage 1



- The riparian fence lines have been cleared and marked out. Fencing begins this week.
- An excavator has been used to assist in defining the drainage lines.
- Landholder has begun weed control, mulching lantana and spraying other weeds



Barlow - Lower Bridge Creek Riparian Fencing

- Riparian fencing complete
- Off stream water setup, 1 tank, 2 troughs and 150 m poly pipe.
- Bunded wall constructed and turf laid.



- Remaining Tasks to complete:
- Weed control bridge creek

Crick - Upper Alcorn Creek Riparian Fencing

- ▶ Riparian fencing has begun along Alcorn Creek.
- ▶ Landholder has continued weed control and tree planting
- ▶ Project development has occurred for future revegetation 2020/21.



Pacific Plantations Weed Management and Revegetation



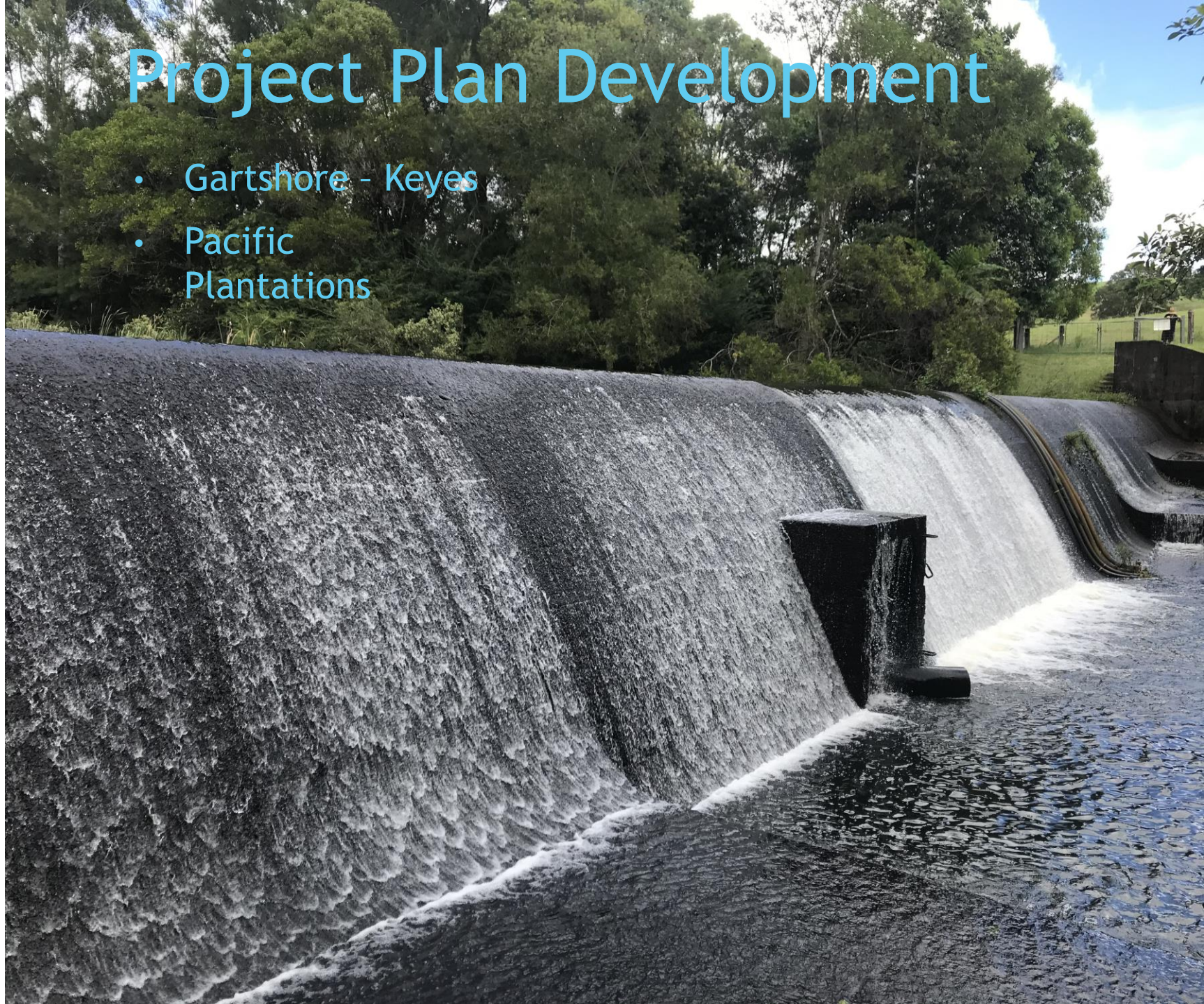
- Work has begun for the revegetation of the Stage 1 site 18/19
- Brush Turkey Enterprises are undertaking the weed management and revegetation.
- Weeds have been sprayed out and preparations are underway for planting in the next month.



Project Plan Development

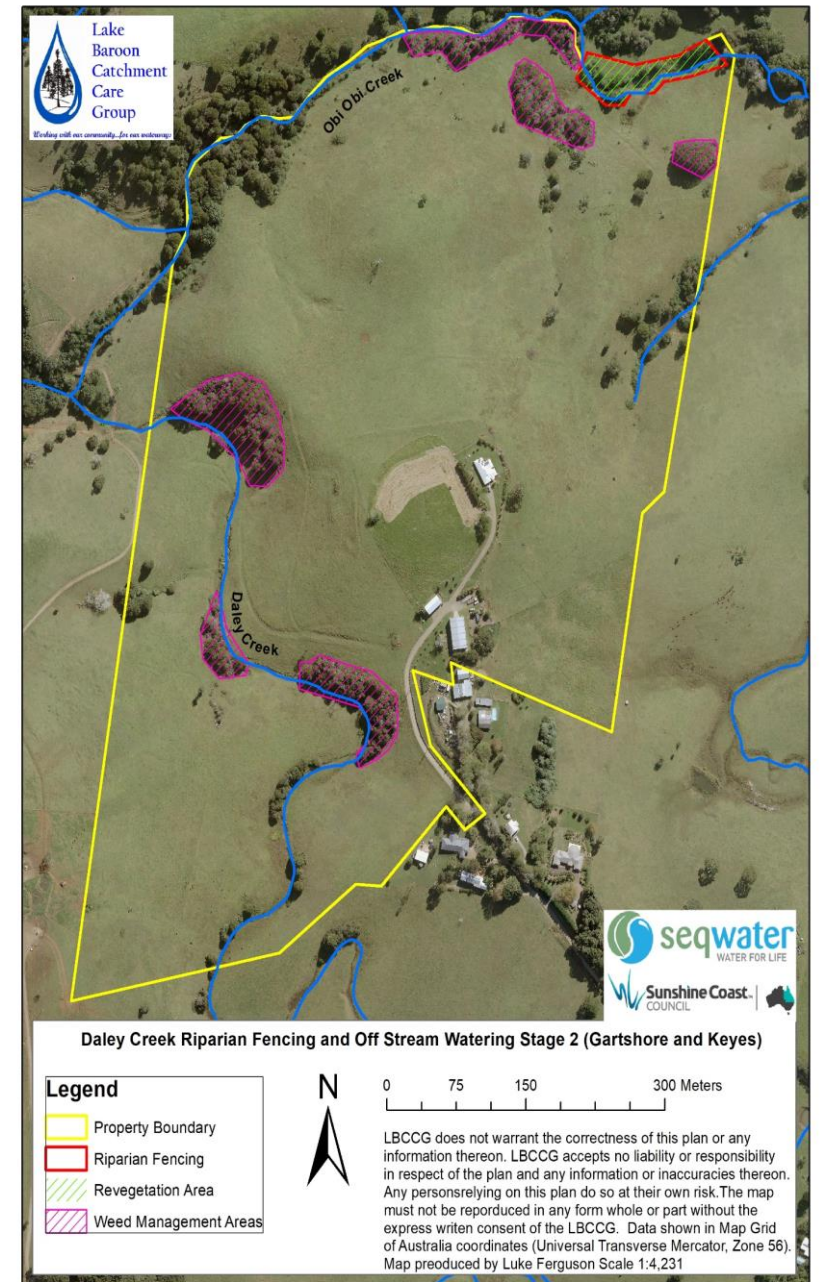
- Gartshore - Keyes
- Pacific Plantations

Kings Lane Weir
- Obi Obi Creek



Gartshore & Keyes - Daley Creek and Off Stream Watering Stage 2

- ▶ Property inspection has taken place and development of a project plan is currently underway.
- ▶ North eastern neighbours, Yolanda and Stuart Barlow, are being incorporated into the plan, due to the give and take fencing of Obi Obi Creek.
- ▶ Project plan aims to complete three components
 1. Riparian fencing 250 m of Obi Obi Creek.
 2. Revegetating riparian zone, 0.3 Ha.
 3. Weed management 1 Ha.
- ▶ Primary project aim is to reduce livestock access and contact with streams and riparian zones.

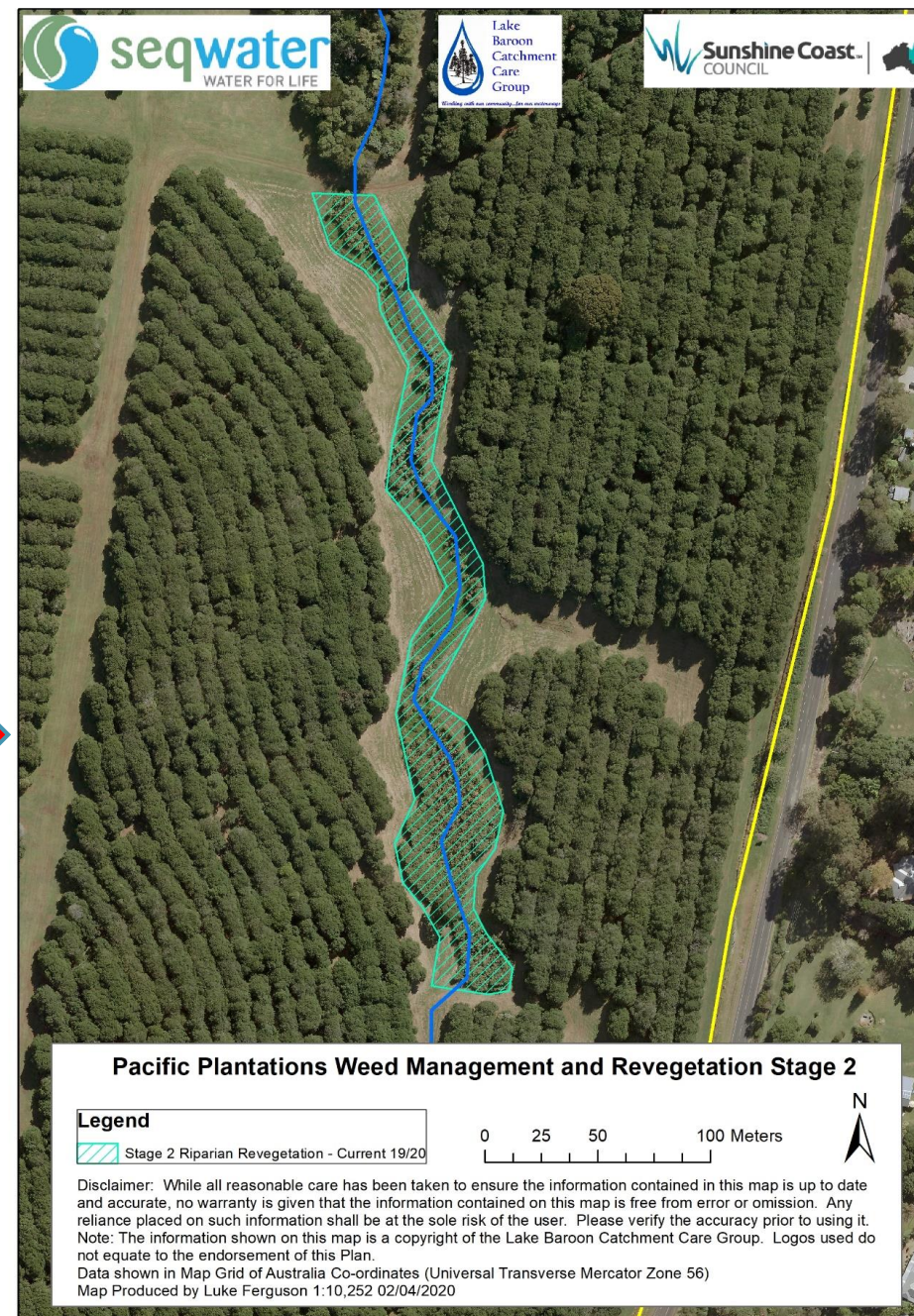
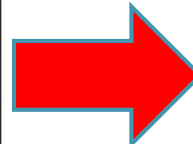
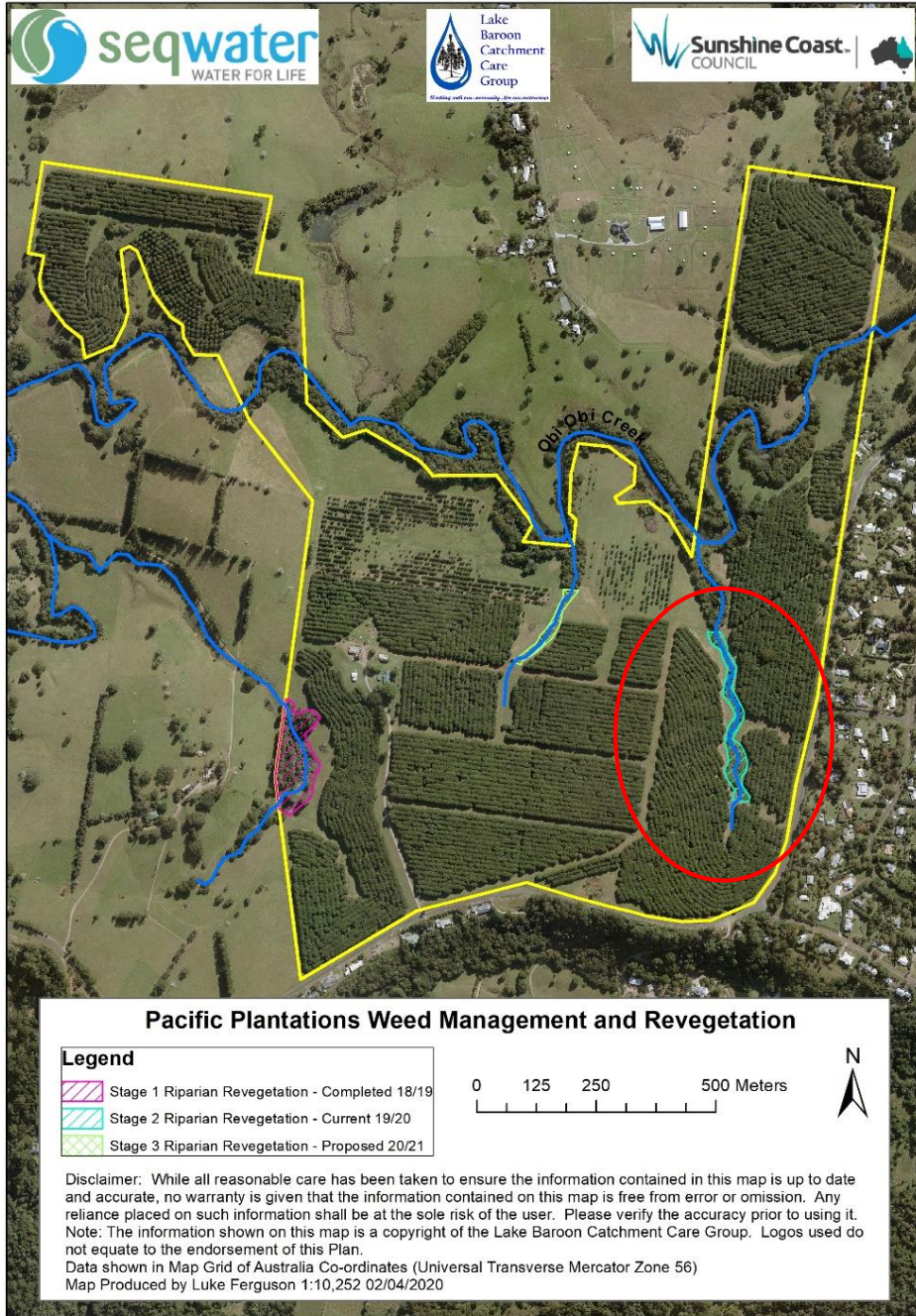


Pacific Farms Weed Management & Revegetation Stage 2

- ▶ Property inspection has taken place and development of a project plan is currently underway, for weed management and revegetation of an unnamed tributary of Obi Obi Creek.
- ▶ Project Plan aims to complete three components
 1. Weed Management 1 Ha
 2. Riparian Revegetation, 2500 stems
 3. Drainage 400 m
- ▶ The project aims to support Pacific Farms to establish and improve pollinator and predator habitat while reducing risk to water quality by improving stream stability, establishing riparian vegetation and protecting and enhancing remnant vegetation (and threatened species).



Photo: Riparian site to be revegetated, unnamed tributary of Obi Obi Creek



Other Work

- ▶ Annual Plan - Development of projects for 2020/21
- ▶ Maleny Sustainable Beef
 - ▶ Production of A1 property maps to assist landholders with future planning.
 - ▶ Animal Health workshop
- ▶ Biosecurity - washdown procedure for LBCCG staff and contractors
- ▶ Future:
 - ▶ Seqwater Source Protection Partners workshop Series

