



2013 Eden Road revegetation



Lake Baroon Catchment Care Group

CORE/Administration Report

March 14, 2019



Current Projects Expenditure & Status

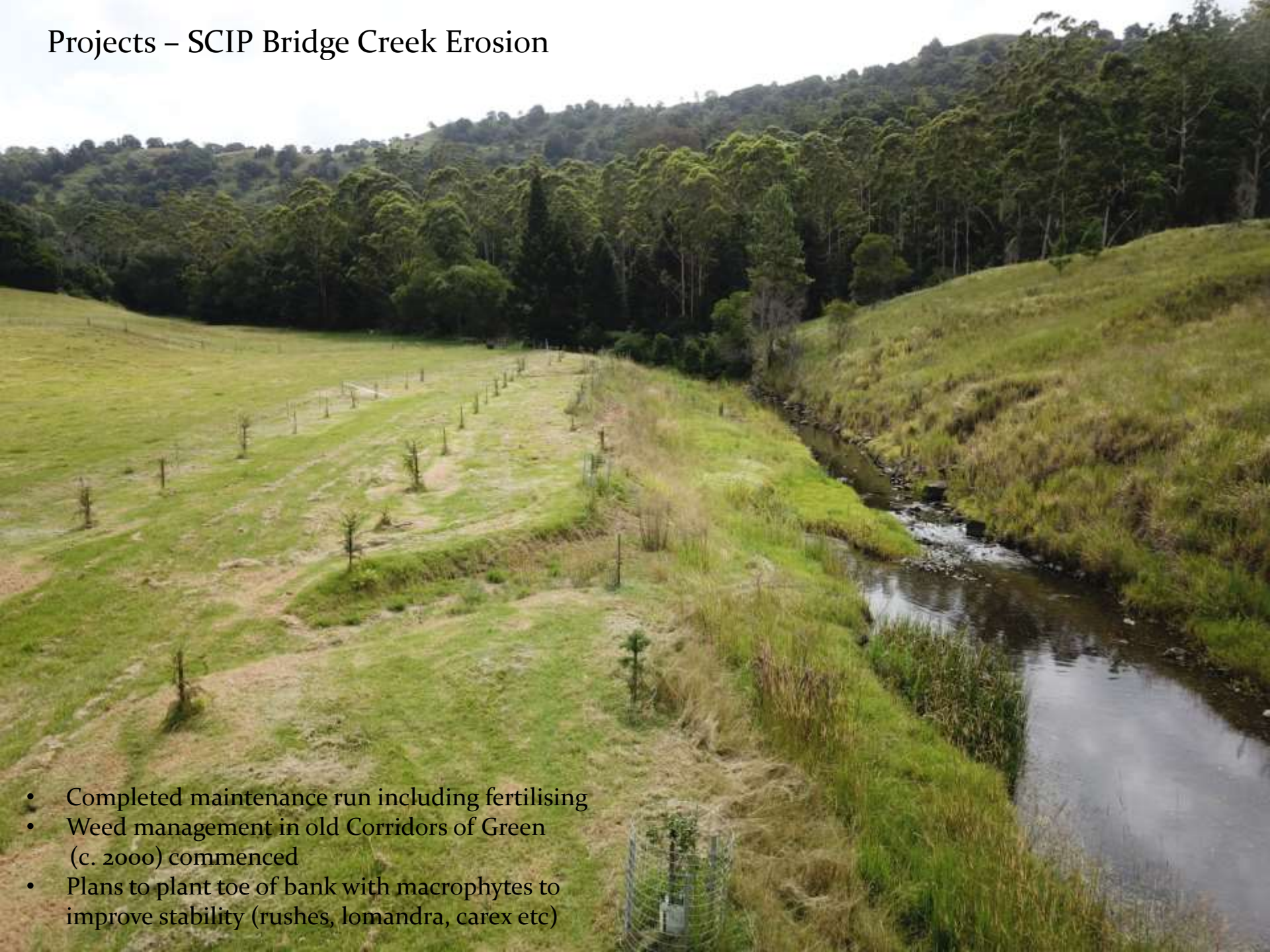
LBCCG Project Expenditure 2018-19			All figures exclusive of GST		Note: Figures WILL NOT correlate with LBCCG Balance Sheet		
<i>Created 13/3/2019</i>			INCOME		EXPENDITURE		
Number	Project Name	Status	All income	since last meeting	2018/19	Total expend	
1415-003	Restoring Bridge Creek Year 3	Completed	\$ 8,618.62	\$ 1,330.12	\$ 1,730.12	\$ 8,618.62	
1415-008	Erowal Riparian Fencing & OSW Stage 3	Completed	\$ 5,390.84		\$ 1,050.00	\$ 5,390.81	
1516-014	Alcorn Creek Recovery Stage 1	Riparian fencing underway	\$ 38,730.00		\$ 6,000.00	\$ 29,655.80	
1617-008	Clark Creek OSW Project	Completed, minor maintenance	\$ 52,089.00		\$ 11,075.61	\$ 48,511.54	
1617-010	Walkers Creek Rehab & Enhancement 3	Completed	\$ 8,093.18	\$ 1,475.46	\$ 2,682.26	\$ 7,804.26	
1617-015	Lawley Creek Tributaries Partnership	Completed	\$ 45,500.00	\$ 492.92	\$ 764.19	\$ 44,770.27	
1718-001	Bridge Creek Connections (CSA grant)	70% completed, revegetation continuing	\$ 57,324.00		\$ 29,580.04	\$ 39,358.30	
1718-002	Lower Bridge Creek	Maintenance continuing on schedule	\$ 36,088.00	\$ 640.00	\$ 1,500.00	\$ 24,017.81	
1718-003	Falls Creek Riparian Fencing	Weed management to be completed	\$ 38,632.00		\$ 4,900.26	\$ 35,861.25	
1718-006	Northern Alcorn Creek 3	Completed	\$ 27,980.00		\$ 17,090.00	\$ 24,633.48	
1718-008	Clark Creek OSW Project Stage 2	Completed	\$ 29,626.00	\$ 16.73	\$ 23,847.67	\$ 28,866.60	
1718-015	Lawley Creek Tributaries Partnership Yr2	Completed	\$ 16,733.27		\$ 5,355.00	\$ 16,733.27	
1718-016	Bridge Creek Erosion (SCIP)	Fencing complete, reveg 50% complete	\$ 62,233.88	\$ 1,530.00	\$ 28,560.00	\$ 43,271.17	
1718-018	Landslide Program 2017/18	Completed	\$ 342,266.00		\$ 235,461.25	\$ 342,264.98	
1718-019	Priority Weed Program 2017/18	Completed	\$ 90,178.00		\$ 4,776.00	\$ 90,144.45	
1718-020	Dairy API Program 2017/18	80% completed (effluent systems TBC)	\$ 313,200.00		\$ 56,233.31	\$ 280,255.01	
1718-031	DTMR Weeds 2018	75% completed	\$ 17,500.00		\$ 5,640.00	\$ 12,508.00	
1819-000	Temporary Projects	Completed	\$ 248.40	\$ 248.40	\$ 248.40	\$ 248.40	
1819-003	Walkers Creek OSW	Completed	\$ -		\$ 3,443.10	\$ 3,443.10	
1819-006	Upper Alcorn Creek Stage 1	OSW installed, crossing to be installed	\$ 12,400.00		\$ 7,200.00	\$ 7,200.00	
1819-009	Maleny Sustainable Beef	40% completed	\$ 49,878.00	\$ 1,863.35	\$ 27,225.25	\$ 27,225.25	
1819-010	Eden Road Management	Revegetation prep, weed mgt	\$ 82,920.00	\$ 636.14	\$ 32,843.41	\$ 32,843.41	
1819-018	Landslide Program 2018/19	50% completed	\$ 359,678.00	\$ 113,799.63	\$ 183,289.37	\$ 183,289.37	
1819-019	Priority Weed Program 2018/19	66% completed	\$ 90,884.00	\$ 8,868.90	\$ 58,176.30	\$ 58,176.30	
1819-020	Dairy API Program 2018/19	Not started (effluent systems TBC)	\$ 205,200.00		\$ 34,240.00	\$ 34,240.00	
Totals			\$1,991,391.19	\$ 130,901.65	\$ 782,911.54	\$ 1,429,331.45	
Includes Income figures promised but not yet received & figures from other contributors (ie Landslide, Dairy & Weed Programs, SCC LEG)							
Includes Project Mgt fees in expenditure (transferred to Administration)							
Figures include adjustments							
	Mark						
	Matt						
	Paul						

Projects –
Eden Road Management Plan
(SLAM project)

- Site prep for “Catchment Community Tree Plant”
Saturday March 9 cancelled (lack of numbers) & April 13 ???
- Full site prep completed for approx. 2,800 trees (2 m x 2 m spacing)
- Further prep for approx 1,500 trees underway
- East Coast TAFE pencilled in for April 30, May 1,2 & 7 (15 students per day/up to 60 in total – min. 2,500 trees)
- Weed management commenced in riparian zones



Projects – SCIP Bridge Creek Erosion



- Completed maintenance run including fertilising
- Weed management in old Corridors of Green (c. 2000) commenced
- Plans to plant toe of bank with macrophytes to improve stability (rushes, lomandra, carex etc)



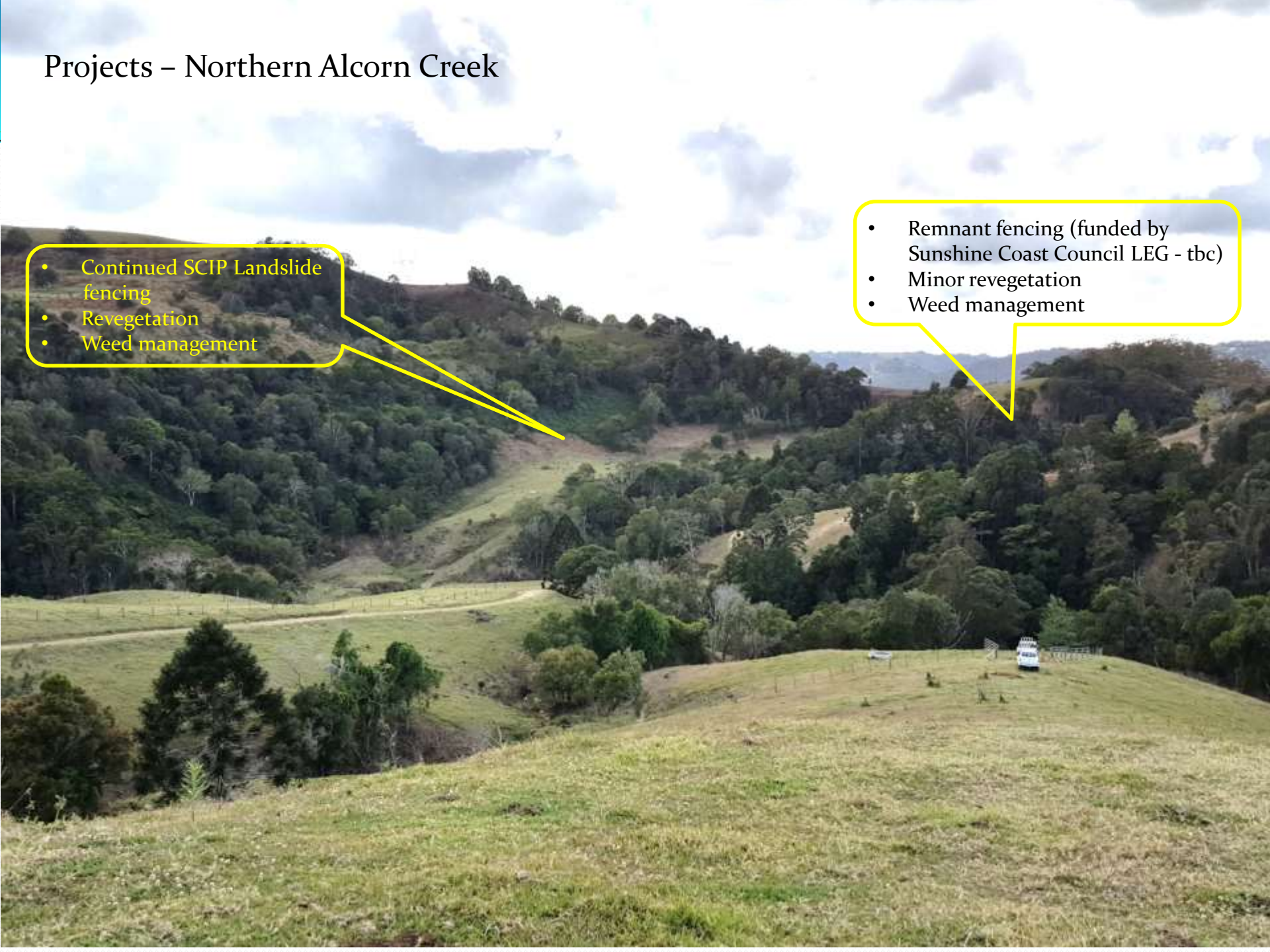
Projects – Alcorn Creek Recovery
(2015/16 project resumed)
CORE & SCIP Landslide funding

- Riparian fencing
- Landslide fencing
- Remnant fencing

Projects – Northern Alcorn Creek

- Continued SCIP Landslide fencing
- Revegetation
- Weed management

- Remnant fencing (funded by Sunshine Coast Council LEG - tbc)
- Minor revegetation
- Weed management



Other

- Sam Price concreting (repair of dam trickle pipes)
- SCC Environment Levy Partnership mid-year Report
- Pacific Farms weed management & revegetation CORE project (under development)
- LBCCG Policies & Procedures
- Website repairs & upgrades (Concept IT)
- Supporting Matt with Landslide Program



Baroon Pocket (photo sourced from J. O'Mara – Seqwater)